

Introduction to Area



twinkl



Aim

- I am learning to find the area of a shape.

Area

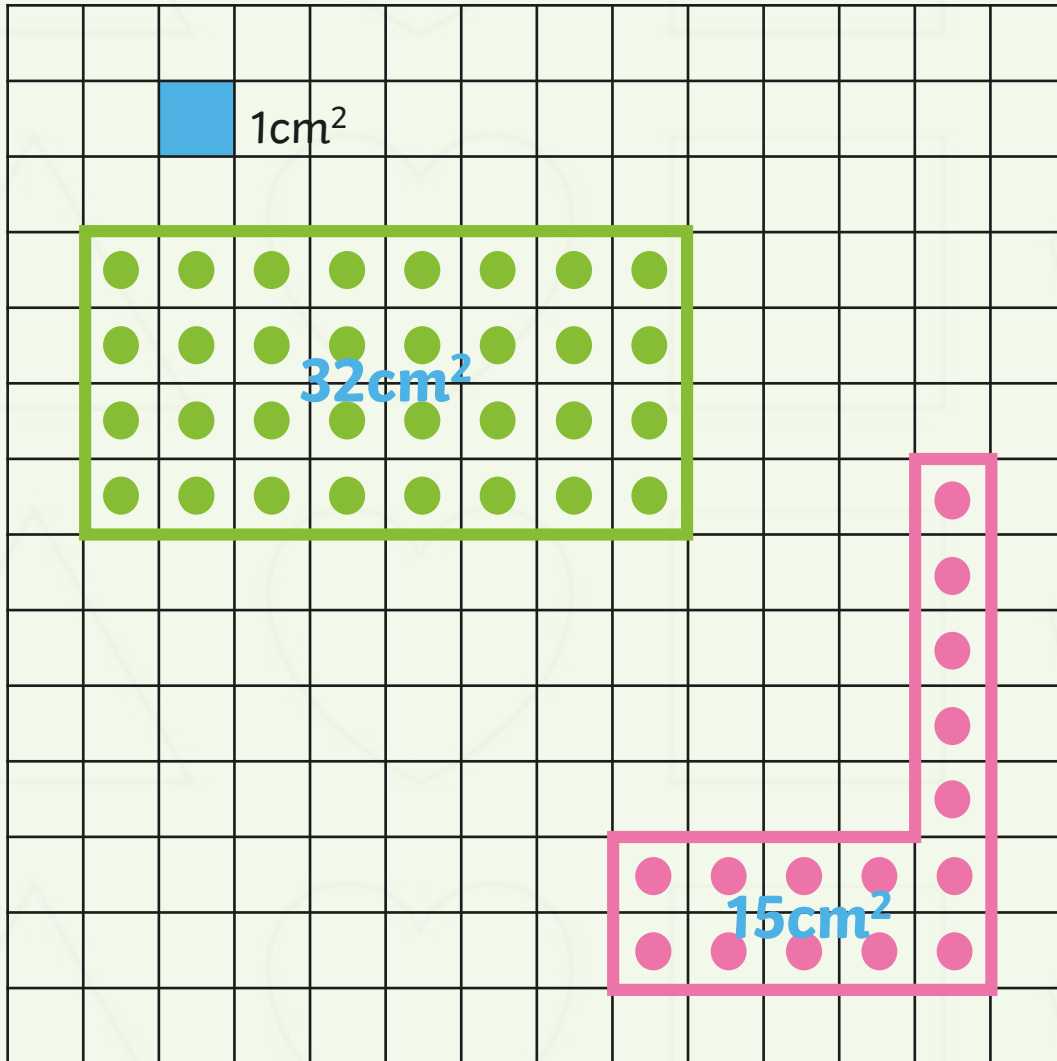
Area is the amount of space inside a given shape.

We measure area in square centimetres - cm^2 .



Area

cm^2

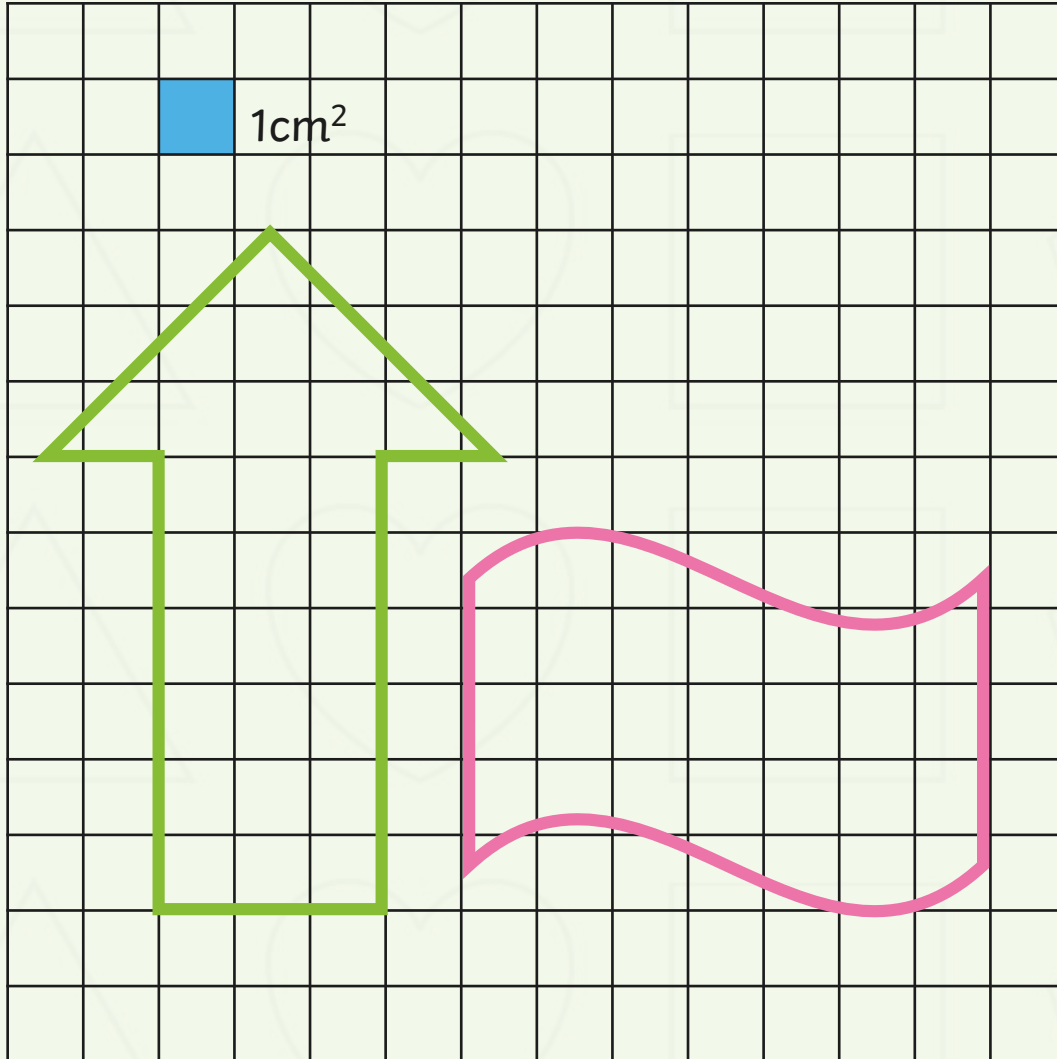


Imagine each of these squares is $1\text{cm} \times 1\text{cm}$. That means the area of each little square is 1cm^2 . (Just like the blue square!)

Can you find the area of the green rectangle by counting the squares?

Can you find the area of the pink shape?

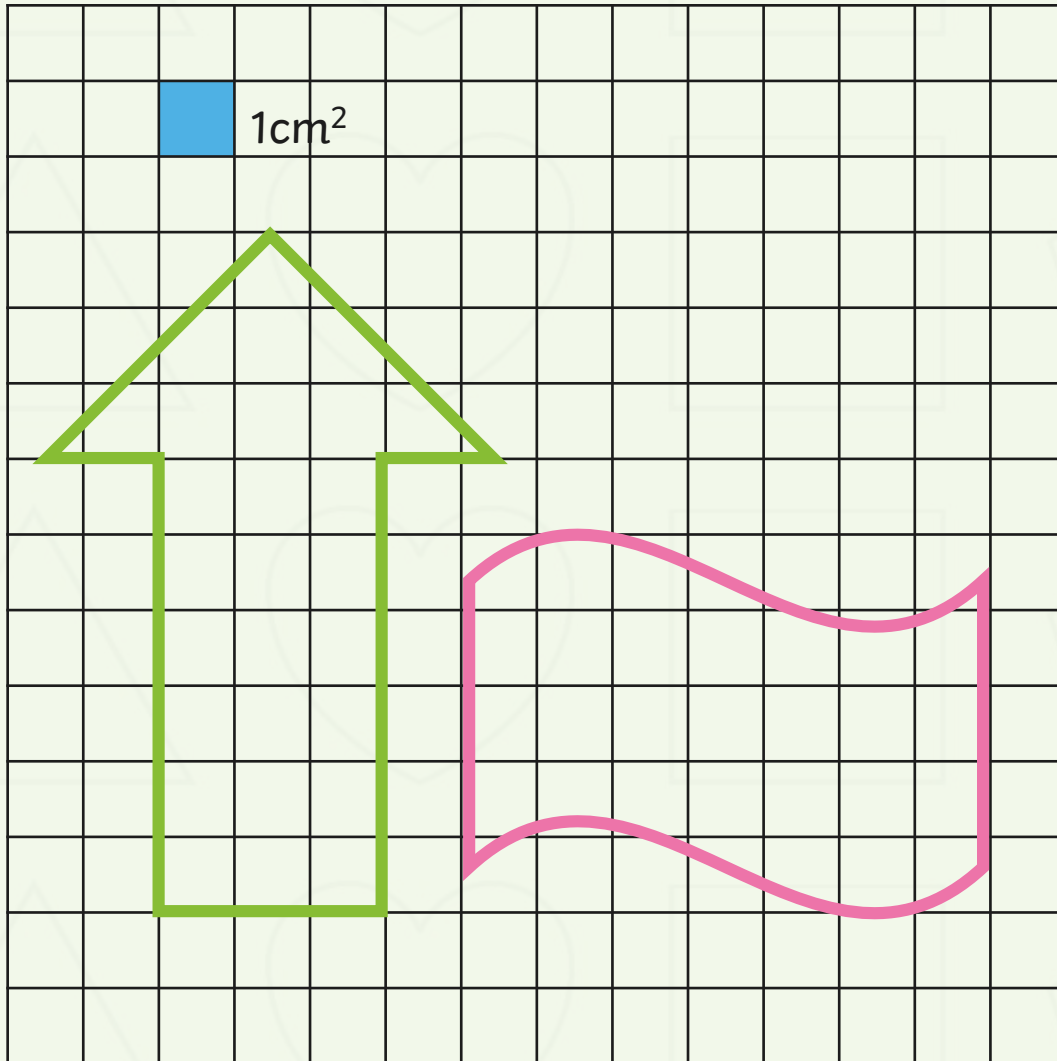
Strange Shapes



Some shapes are difficult to count exactly because they don't fill up whole squares. The easy way to remember is to count the whole squares first. Add any squares which fill half or more and ignore the squares which cover less than half the square.

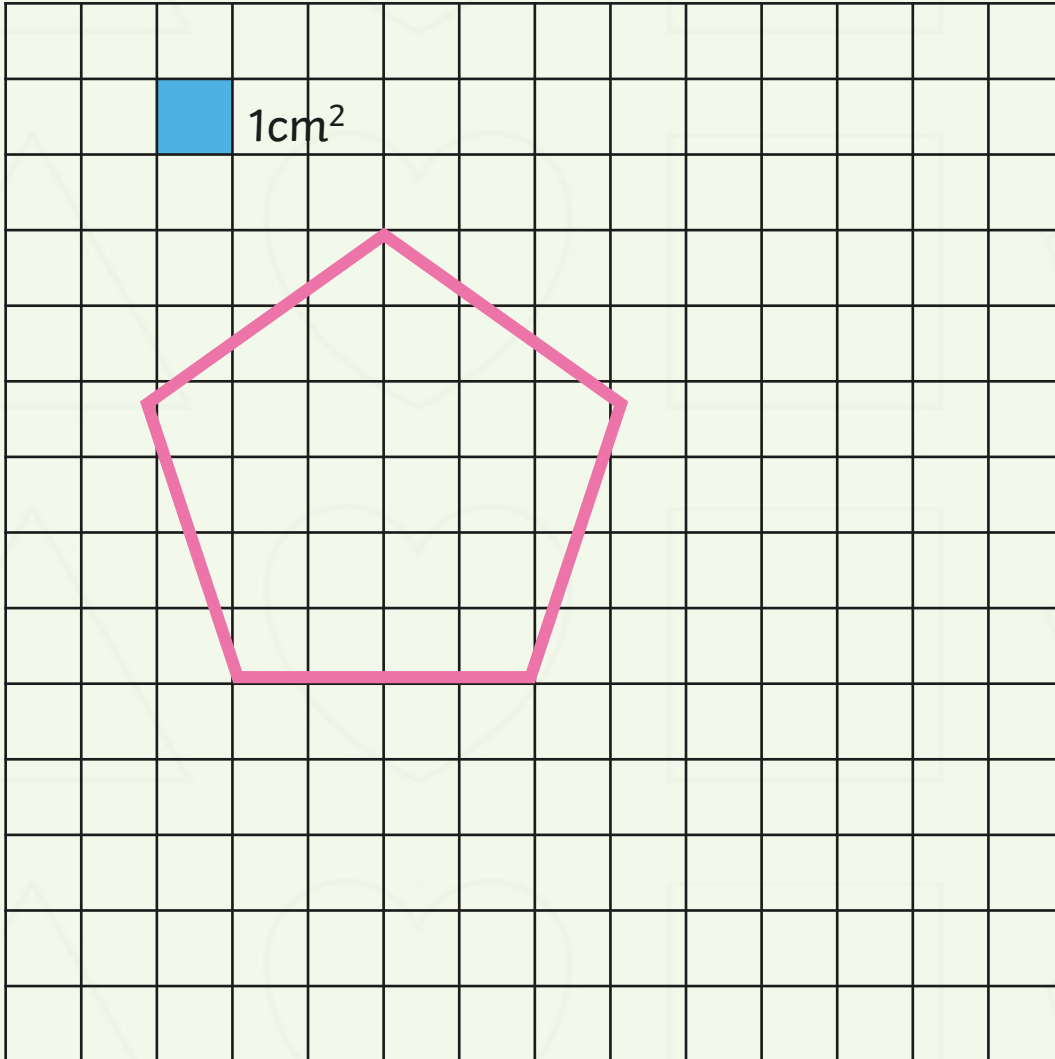
Have a go at finding the area of these 2 shapes. Share your ideas with the class.

Estimating



Because we didn't know the exact area for the two previous sides, we made a guess. This is called an estimate. We didn't just randomly guess, though; we used our knowledge and skills and made an educated guess.

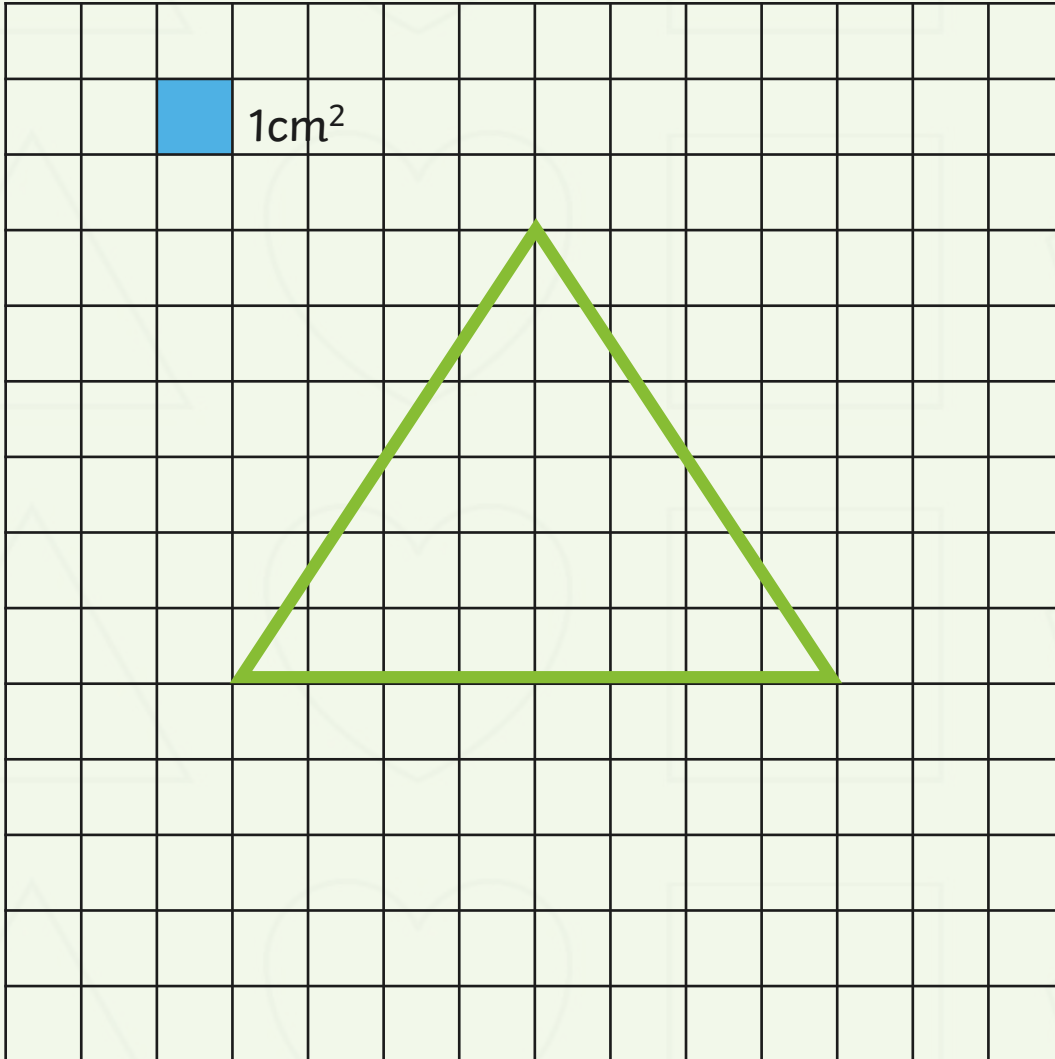
Estimate



Can you estimate the area of this shape?

Check the area by counting the squares.

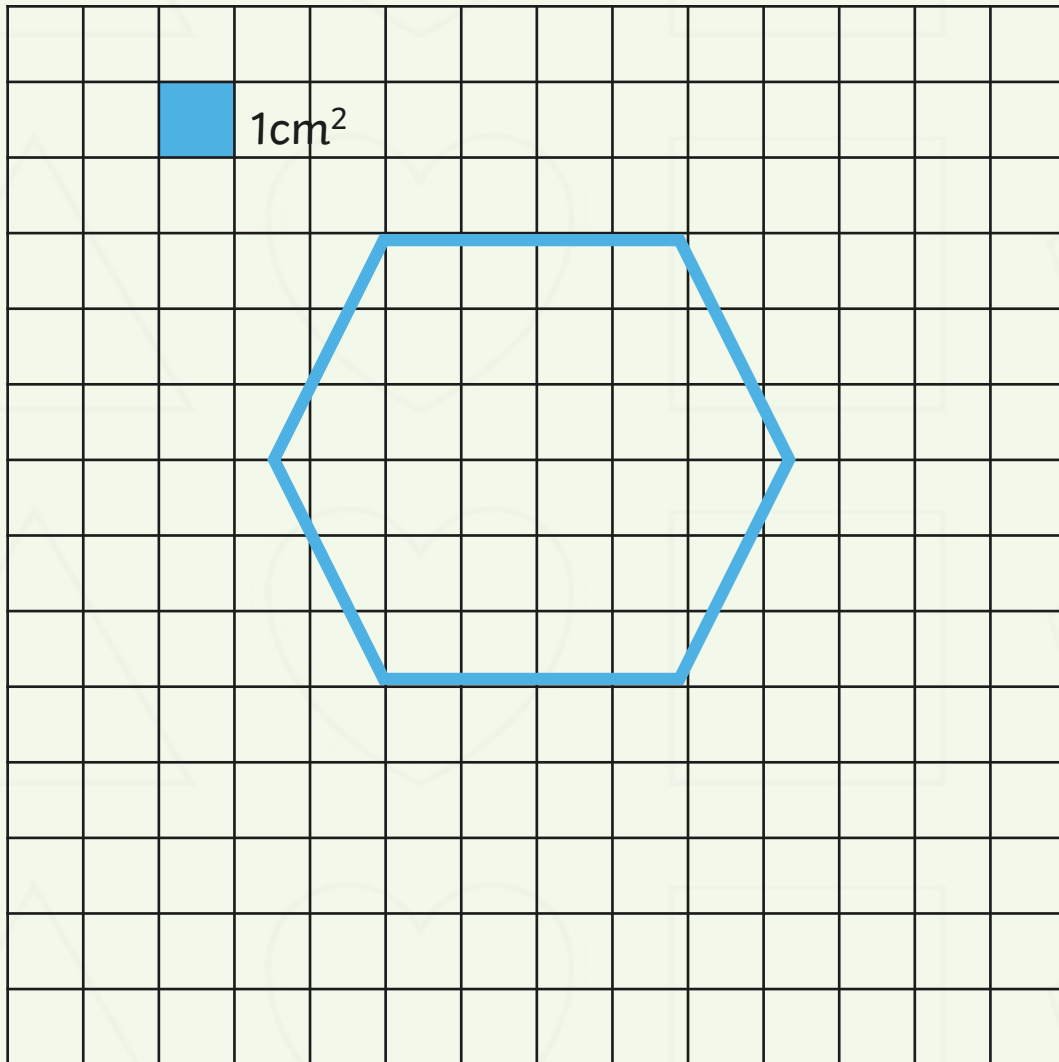
Estimate



Can you estimate the area of this shape?

Check the area by counting the squares.

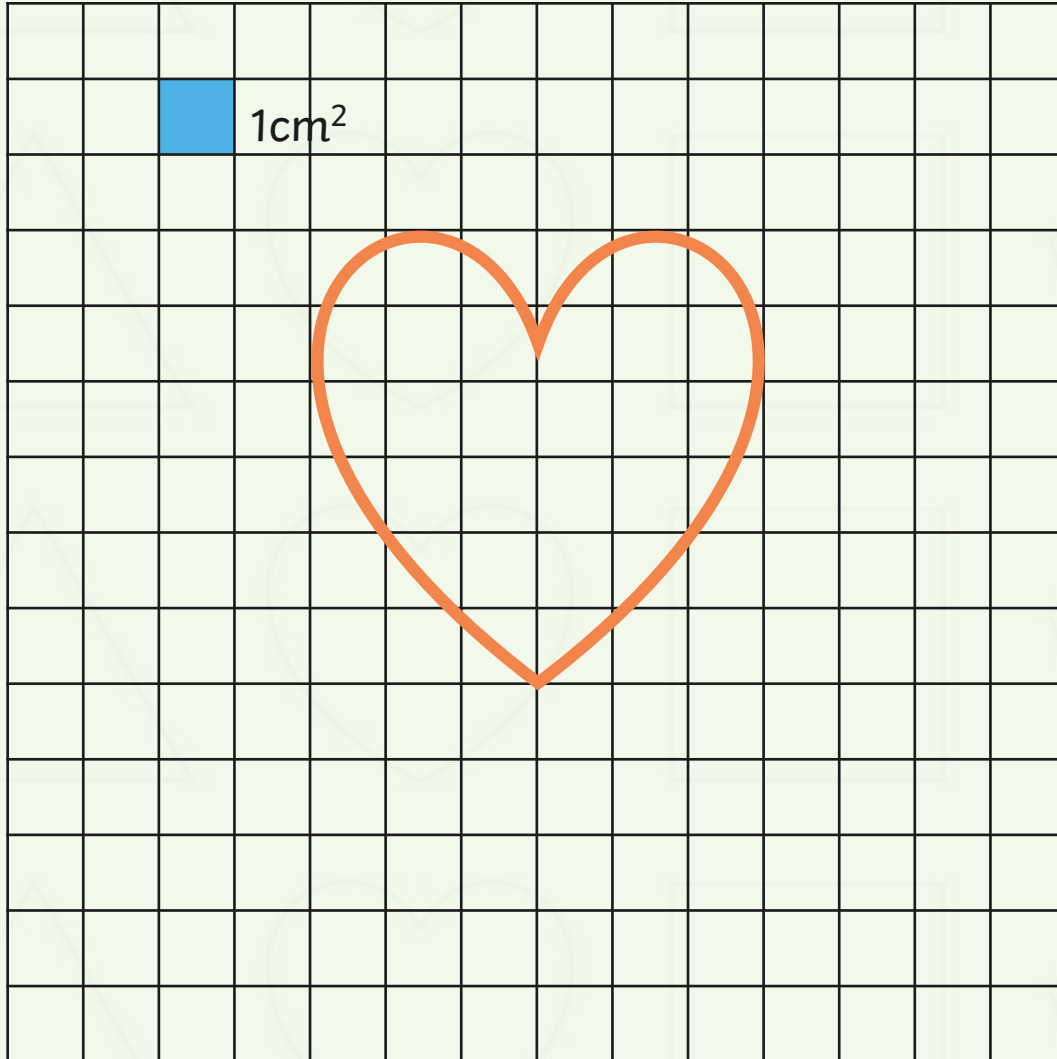
Estimate



Can you estimate the area of this shape?

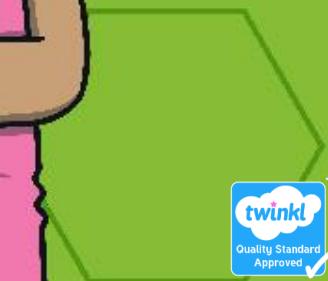
Check the area by counting the squares.

Estimate



Can you estimate the area of this shape?

Check the area by counting the squares.



twinkl

